

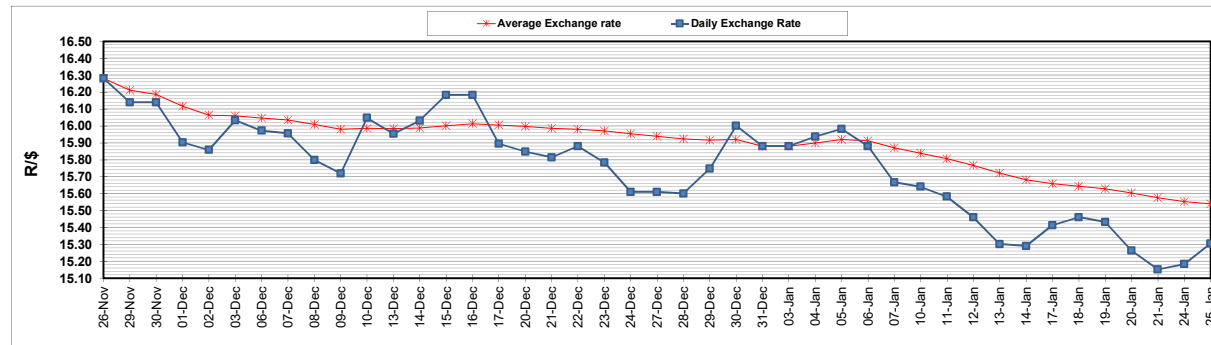
	PETROL 95 ULP	PETROL 93 ULP & LRP	DIESEL 0.05%	DIESEL 0.005%	ILL. PAR.
GAUTENG PUMP PRICE (SA c/l) AS FROM 05/01/2022	1,961.000	1,936.000	-	-	-
WHOLESALE PRICE (SA c/l) AS FROM 05/01/2022	-	-	1,724.680	1,728.080	1,096.688
SINGLE NATIONAL MAXIMUM RETAIL PRICE	-	-	-	-	1,394.000
BASIC FUEL PRICE - 25/01/2022 (SA c/l)	996.519	984.792	1,008.486	1,011.417	1,008.273
PRESS RELEASE CONTRIBUTION TO BFP 05/01/2022 - 25/01/2022 (SA c/l)	903.470	888.470	885.630	889.030	875.128
UNIT OVER/(UNDER) RECOVERY - 25/01/2022 (SA c/l)	(93.049)	(96.322)	(122.856)	(122.387)	(133.145)
AVERAGE BASIC FUEL PRICE 31/12/2021 - 25/01/2022	974.891	962.954	984.455	986.678	982.577
AVERAGE UNIT OVER/(UNDER) RECOVERY 31/12/2021 - 25/01/2022	(59.721)	(62.284)	(87.159)	(85.648)	(95.616)

ANALYSIS MOVEMENT OF AVERAGE OVER/(UNDER) RECOVERY

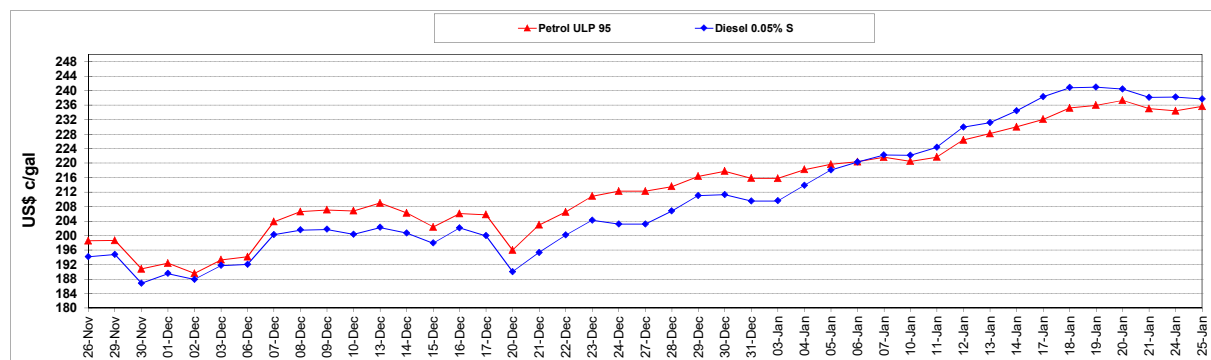
	PETROL 95	PETROL 93	DIESEL 0.05%	DIESEL 0.005%	ILL. PAR.
- MOVEMENT IN INTERNATIONAL PRODUCT PRICES	(83.561)	(85.832)	(111.232)	(109.776)	(119.644)
- MOVEMENT IN EXCHANGE RATE	23.840	23.548	24.074	24.128	24.028
AVERAGE UNIT OVER/(UNDER) RECOVERY 31/12/2021 - 25/01/2022	(59.721)	(62.284)	(87.159)	(85.648)	(95.616)

R/\$ EXCHANGE RATE - (R/\$15.3050 - 25/01/2022)

EXCHANGE RATE USED IN BASIC FUEL PRICE



INTERNATIONAL PRODUCT PRICES OF BASKET USED IN BASIC FUEL PRICE



BASIC FUEL PRICE IN SA CENTS PER LITRE

